



COX AUTOMOTIVE

Manheim Market Insights

August 2025 Mid-Month

Jeremy Robb

Lead Economist, Manheim

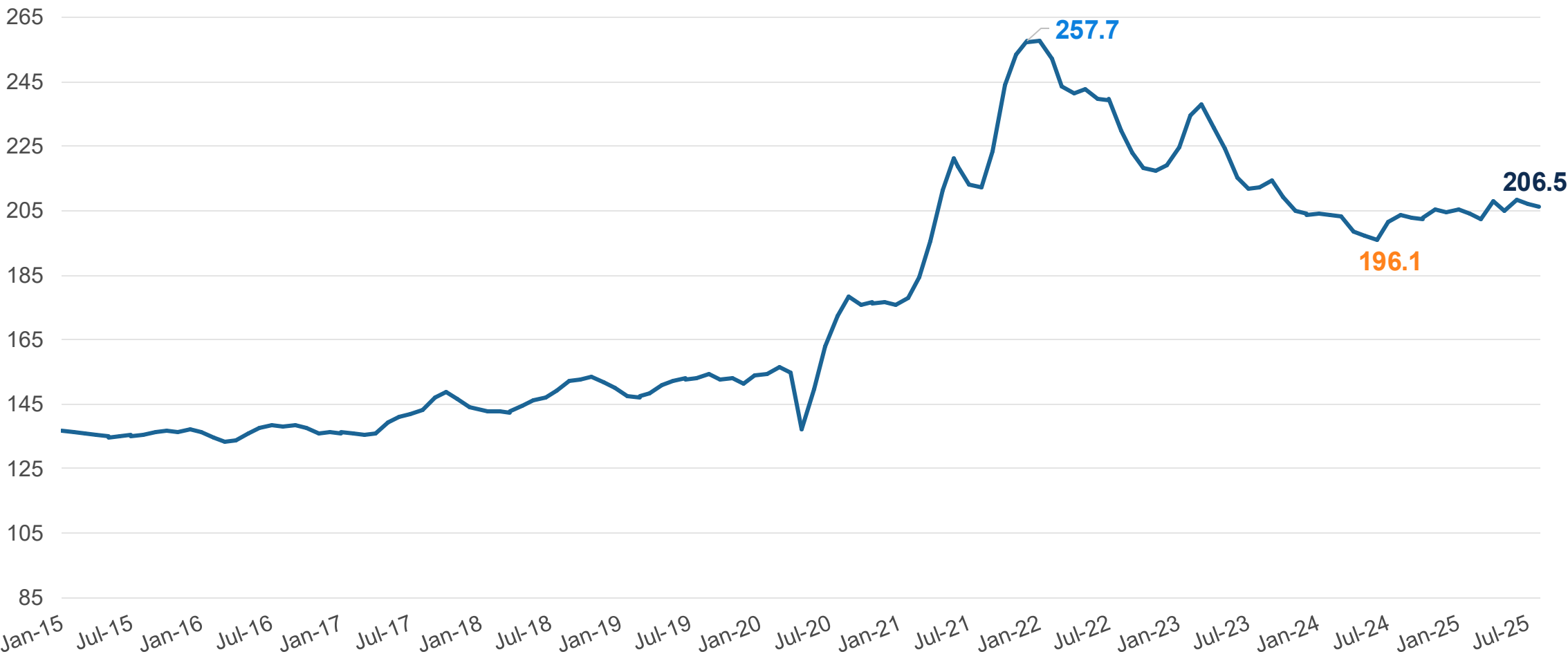
Wholesale Market Trends

- **Wholesale Values:** Stronger than Usual
- **Sales Conversion:** Staying Strong
- **Manheim Days' Supply:** Days' supply remains tighter
- **Electric Vehicle Prices:** Showing a bit of strength



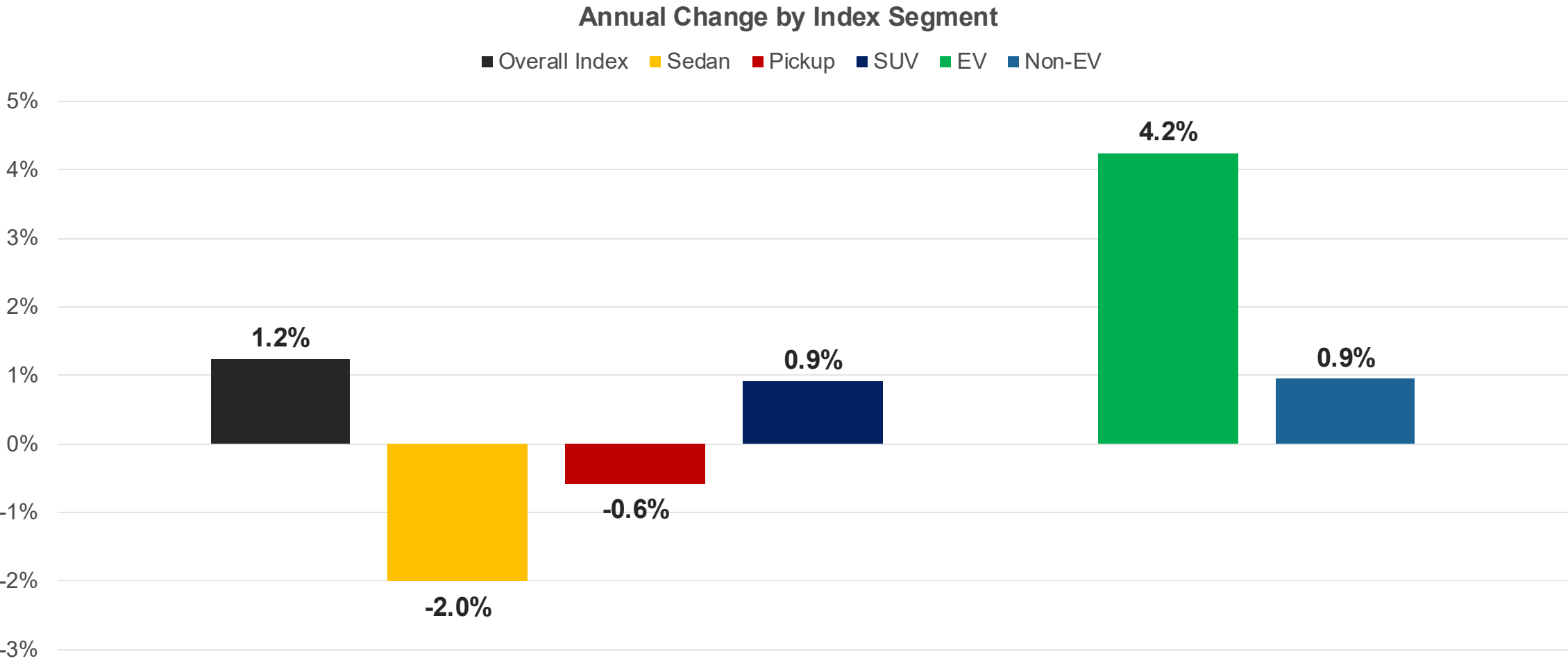
August Mid-Month MUVVI

The index declined 0.4% against the end of July and is now 1.2% above last year



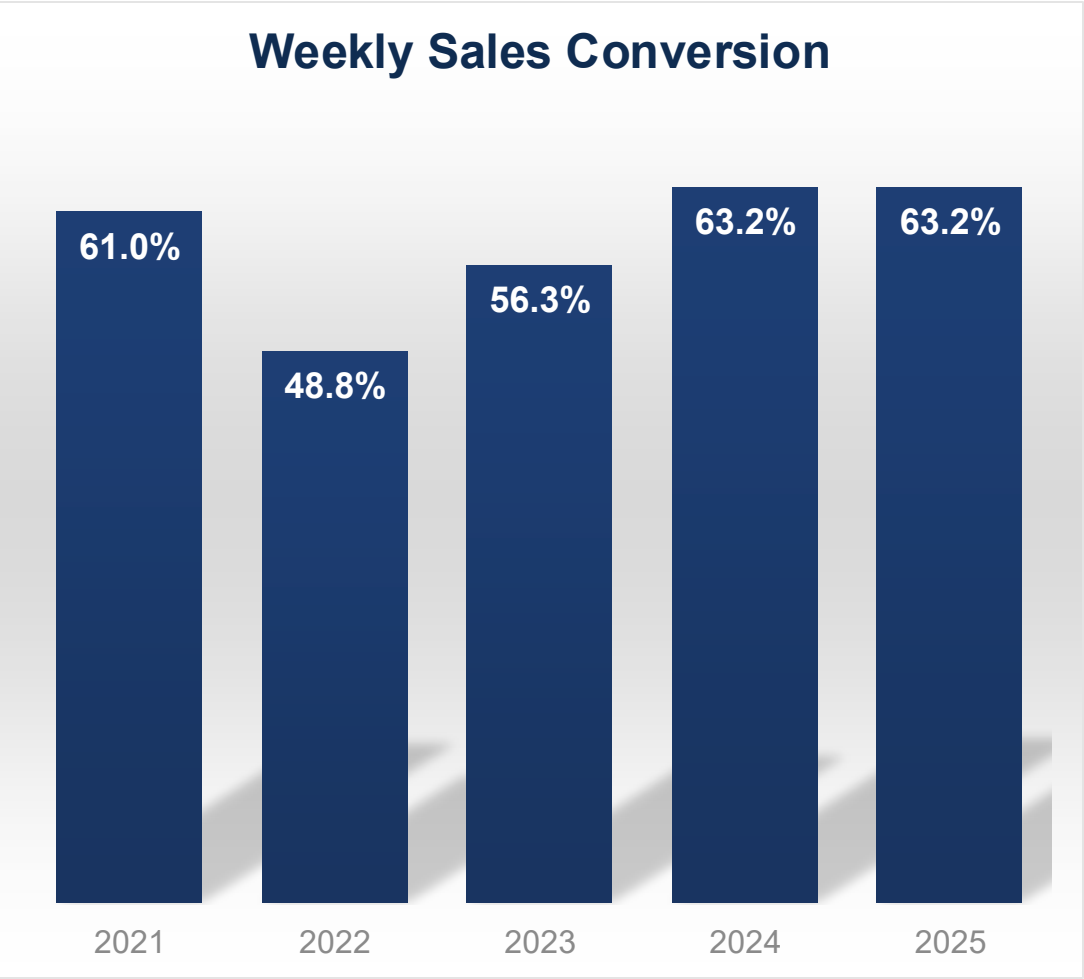
July Mid-Month MUVVI Changes by Segment

Many segments are now lower versus last year, while EVs show the largest gains



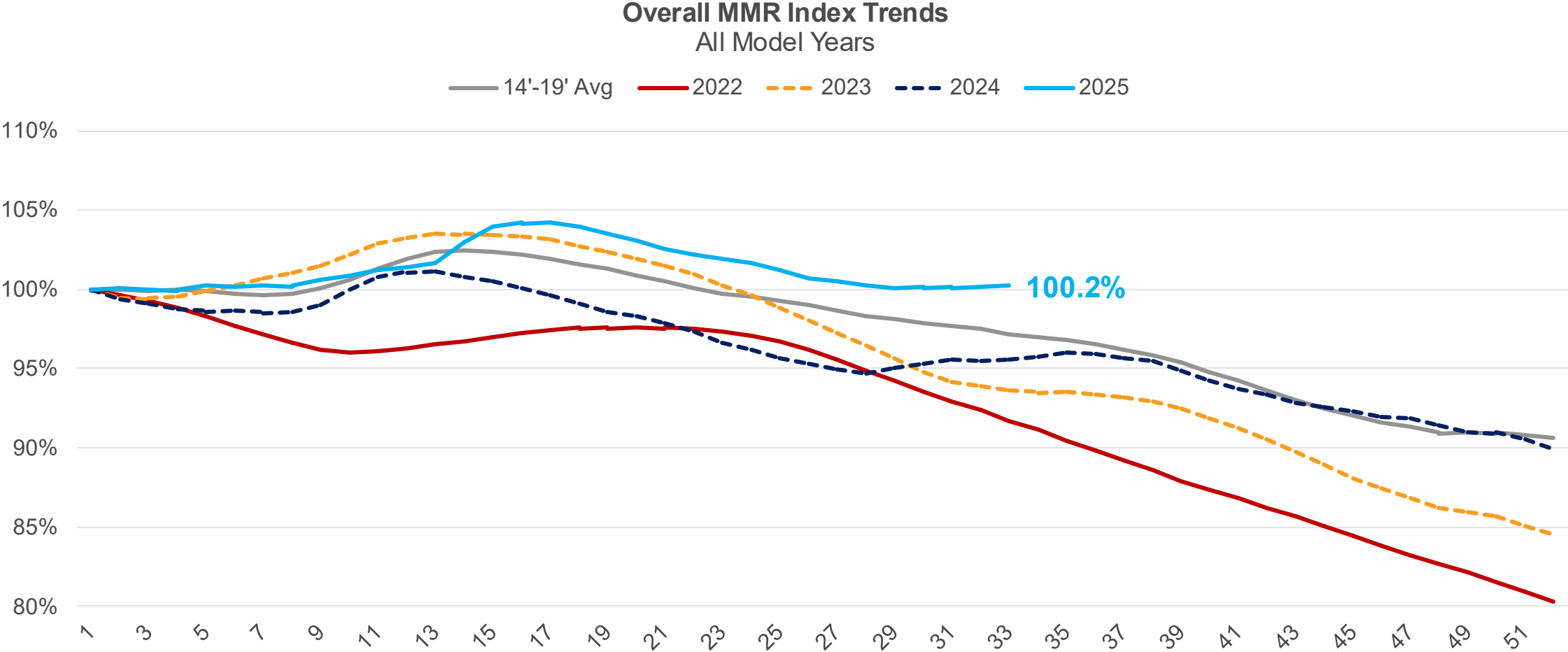
Sales Conversion & Days' Supply

Sales Conversion has been strong lately as demand increases, driving days' supply lower at Manheim



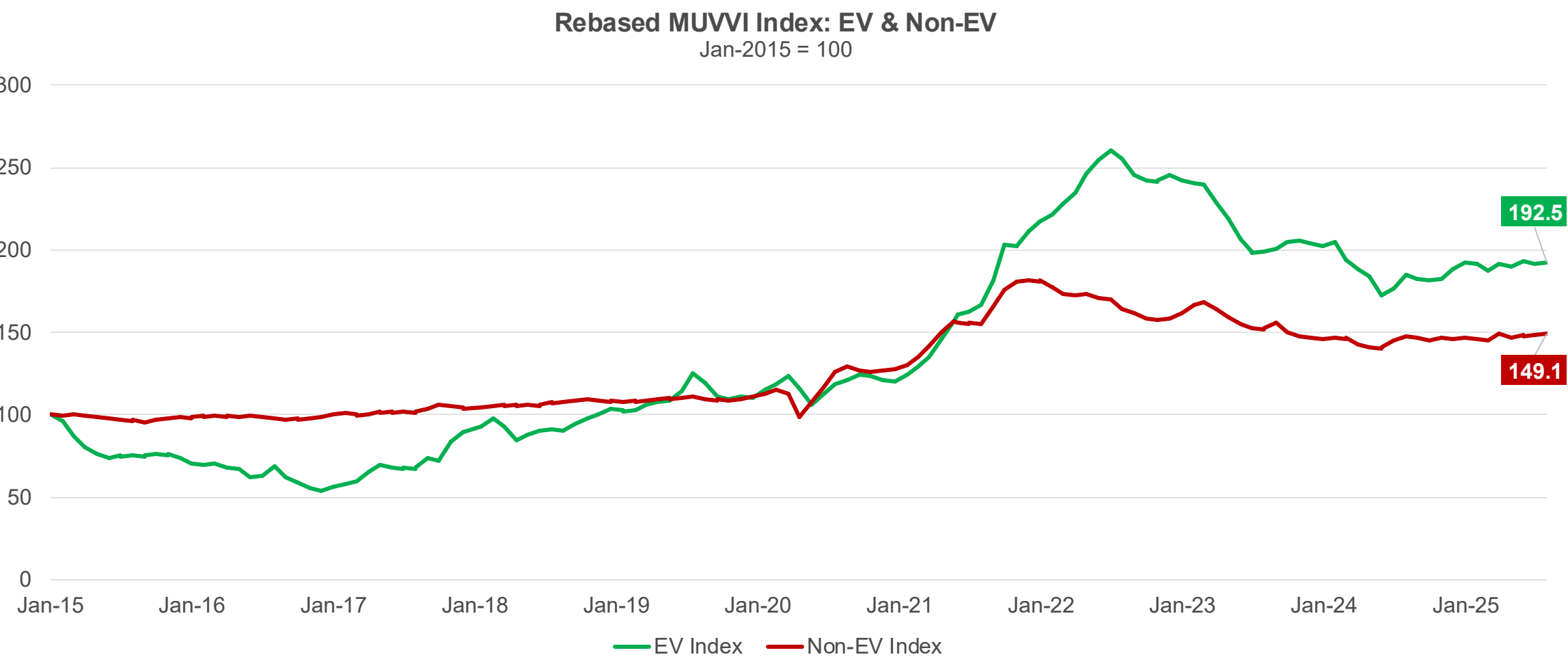
Wholesale Value Retention Index

MMR values have been steady in recent weeks and remain elevated against long term trends



Manheim Index: EV & Non-EV

The EV Index rose a bit more than the Non-EV Index over Q2 yet outperformed against last year



Summer is coming to an end – and if you expected things to slow down, as did many, then you're playing catch-up.

While the year has been a bit volatile, there's still a lot of strength out there – at least for now!

